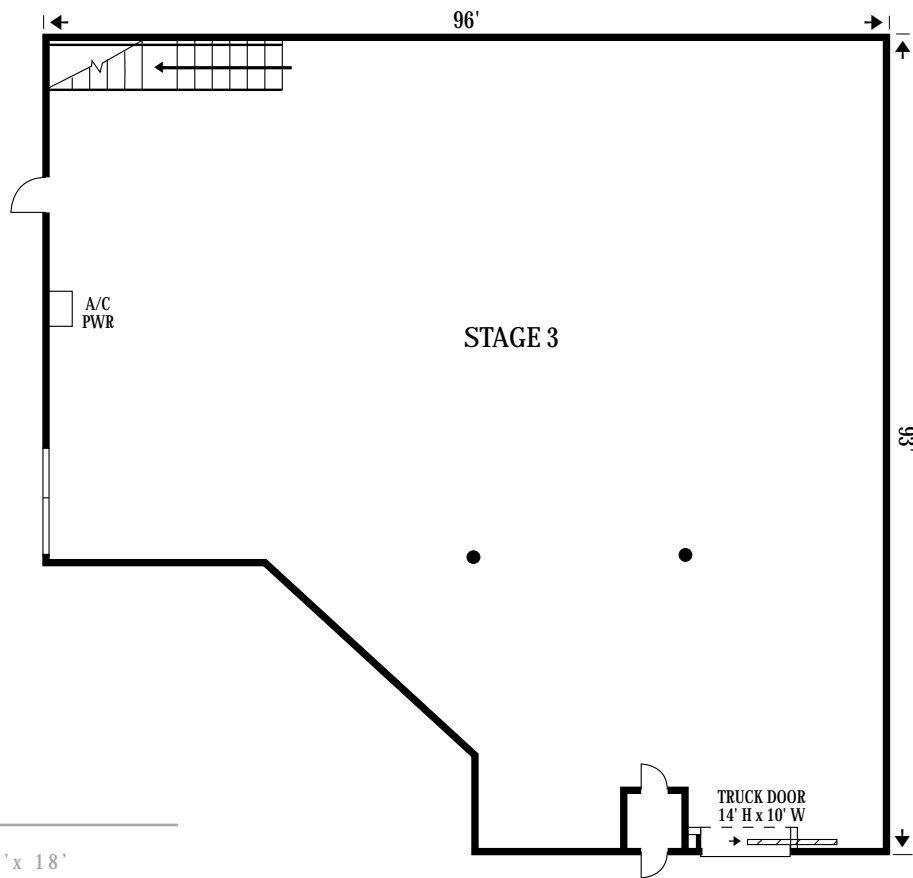


# stage 3

- 96'x 93'x 23' grid
- 8,000 square feet total
- 1800 amps (additional power available)
- Make-up/dressing room (air conditioned)
- Production offices (air conditioned)
- Electronic phone system
- Drive-in truck door 14' high x 10' wide
- 24 reserved parking spaces



stage 1 100'x 100'x 18'

stage 2 50'x 80'x 17'

stage 3 96'x 93'x 23'

stage 4 70'x 70'x 24'

stage 6 112'x 88'x 24'

stage 7 116'x 96'x 22/25'

