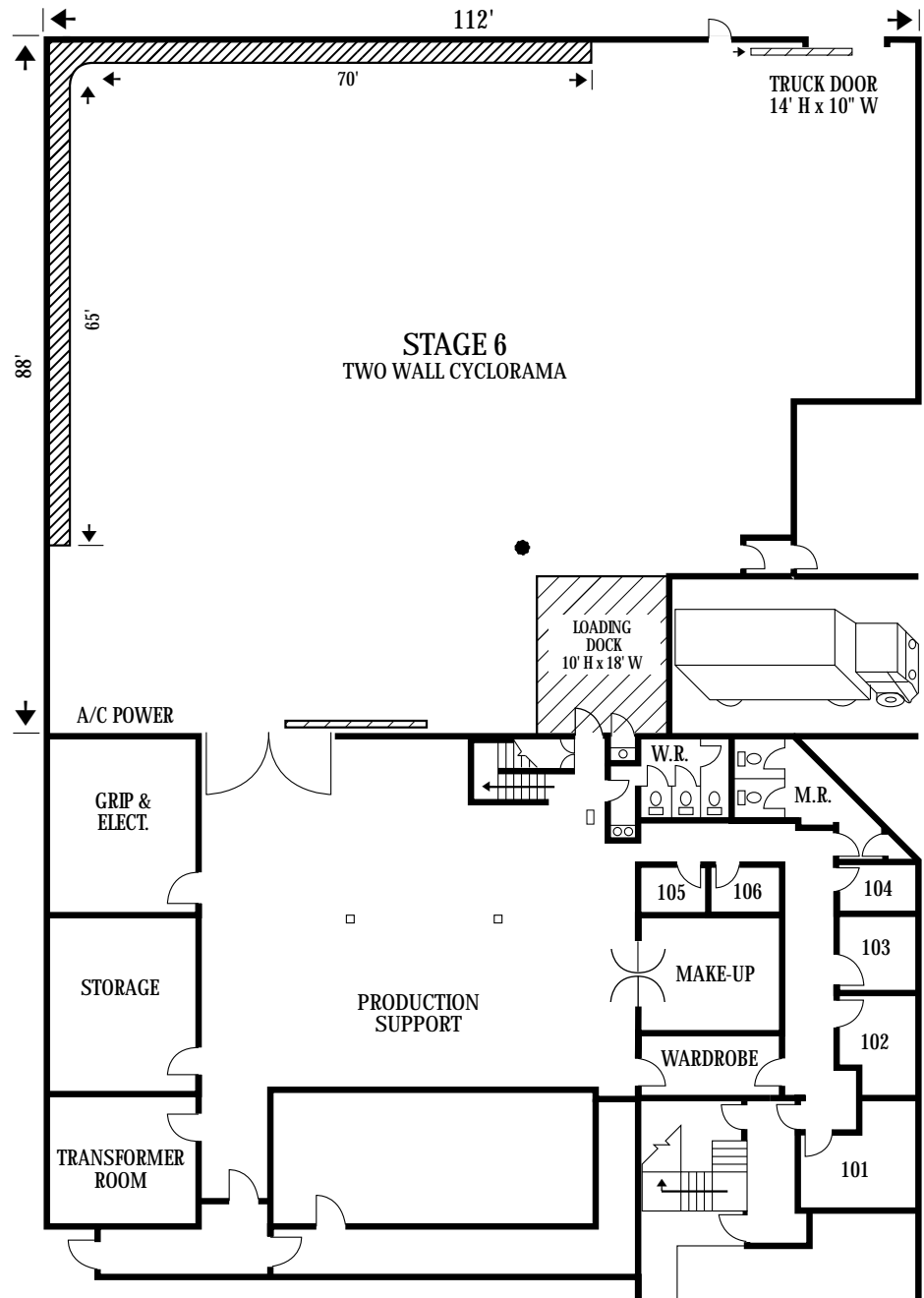


stage 6



- 112' x 88' x 24' grid
- 16,200 square feet total
- 9,800 square feet of stage space
- Two wall Cyclorama (65' x 70' x 24')
- 3,400 square feet (14' high) production support
- 3600 amps of stage power
- Separate make-up & dressing room
- Production offices with electronic phone system
- Loading dock 10' high x 18' wide
- Drive-in truck door 14' high x 10' wide
- 41 reserved parking spaces

stage 1 100' x 100' x 18'

stage 2 50' x 80' x 17'

stage 3 96' x 93' x 23'

stage 4 70' x 70' x 24'

stage 6 112' x 88' x 24'

stage 7 116' x 96' x 22/25'